

# Wollaton East & Lenton Abbey Area Committee Ward Performance Report October to December 2013



Neighbourhood Development  
Officer Pauline Dorey  
Unofficial September 2013 Data

# Introduction

- The WELA ward has a growing diverse community in Lenton Abbey with 74% white British and 6% other white some of whom have English as another language and others of mixed heritage, Black British and Caribbean and Asian origin. The 2012 Insight and 2010 ONS statistics are slightly skewed by the transient student population mainly studying at University of Nottingham.
- Wollaton Park estate has a hidden community of disabled children, young people and older adults and due to caring responsibilities have pockets of fuel poverty.
- In the top 10% nationally of SOA's for Crime and Disorder and Income Deprivation affecting children. However reported crime figures have generally fallen across the ward compared to the previous year.
- Wollaton Park estate have seen a growing number of HMO's and are experiencing increasing problems with their landlords.
- Ongoing car parking and traffic issues across the Ward

# Wollaton East and Lenton Abbey

## - Ward Priorities

Theme	Priorities	Key Actions	Outcome	Lead
<b>SAFER</b>	<p>To reduce antisocial behaviour</p> <p>To improve awareness of Domestic Violence issues amongst partners</p> <p>To reduce violent dog attacks in Lenton Abbey</p> <p>Increase visibility of the Police</p>	<p>Co-ordinate work of Neighbourhood Services, Community Protection, Police &amp; NCH. NCH Environmentals Produce DV and other support services Info packs for partners. Focus on DV support work by faith organisations in ward.</p> <p>Action Planning at NAT meetings.</p> <p>Dog Control Order started October 2012. Continued Awareness and Enforcement Campaign</p> <p>Community Engagement Activities</p>	<p>NAT Problem Solving meetings resolving actions and identifying hotspots</p> <p>Fencing - community evaluation completed</p> <p>DV packs distributed to partner organisations in WELA ward .</p> <p>Improve reporting by residents. Feeding intelligence from residents to CPO's re aggressive dogs, continue operations.</p> <p>Promote LAG's</p>	<p>Locality Management</p> <p>NCH</p> <p>All partners Locality Management, Locality Management</p> <p>Locality Management, Community Protection</p> <p>Police NPBT</p>
<b>NEIGHBOURHOODS</b>	<p>To reduce parking problems in the ward</p> <p>To tackle levels of fly tipping and untidy gardens by landlords of HMO's and in general</p>	<p>Experimental TRO in Lenton Abbey now in place</p> <p>Traffic Survey undertaken in Wollaton Park est</p> <p>Increased patch walks and enforcement. Monitor progress at monthly NAT meetings..</p>	<p>Community Consultation on Experimental TRO will be ongoing for 18 months</p> <p>Traffic Survey results being considered for proposals</p> <p>Improved partnership working Increased patch walks and enforcement.</p> <p>Improved cleanliness</p>	<p>Locality Management</p> <p>Traffic Management</p>

# Wollaton East and Lenton Abbey

## - Ward Priorities

Theme	Priority	Key Actions	Outcome	Lead
<b>NEIGHBOURHOODS</b>	<p>Reduction of dog fouling</p> <p>Ensure the views of local people assist in setting priorities</p> <p>Neighbourhood Transformation Plan</p>	<p>Implementation of Dog Order. Review of need for additional bins in key sites</p> <p>Ongoing community and partner consultation on Ward Plan and Wensor Ave Allotment project. 20mph, Ring Road Improvements, Hawton Spinney Management Plan, LA Experimental TRO, Sutton Passeys Crescent play area, LA Park. Ongoing consultation with citizens, tenants and residents &amp; VCS organisations/ groups</p> <p>Partners meetings to develop Action plans on alleyways and old allotment sites</p>	<p>Trying to secure additional funds for revenue costs</p> <p>Community and partner consultation on: Ward Plan, Wensor Ave Allotment site project, Sutton Passeys Crescent play area and Lenton Abbey park, (ongoing). Traffic and parking schemes/ surveys, WP estate, 20mph Experimental TRO, Hawton Spinney Management and Development Plan (all completed)</p>	<p>Locality Management</p> <p>Locality Management</p> <p>Traffic Management &amp; Highways Parks and Open Spaces</p>
<b>FAMILIES</b>	<p>Support work of Community Associations and community groups</p> <p>Help support groups/ communityorganisations develop new activities in the ward</p>	<p>New After School Club half term playscheme in L Abbey Installation of new kitchen at Sheila Roper CC. Painting community centre internally.</p> <p>Supporting local VCS develop new activities for LA residents</p> <p>Support Hope Nottingham re policies/practices</p>	<p>After School Club at Sheila Roper Community Centre start In Sept &amp; activities in Oct ½ term</p> <p>Support Hope Nottingham with partnership building for local projects and improved Safeguarding practices and training .</p>	<p>Locality Management, Family &amp; Community Team, VCS partners / groups</p>

# Wollaton East and Lenton Abbey

## - Ward Priorities

Theme	Priority	Key Actions	Outcome	Lead
<b>FAMILIES</b>	Support develop of new activities for children/young people	Research youth needs and review ward youth provision	Review ward youth provision	Locality Management, FCT, VCS
<b>HEALTH</b>	Promote healthier lifestyles and improve awareness of health issues.  Promote opportunities for tackling fuel poverty.	New publicity and advertising existing activities which promote wellbeing and reduce social isolation.  Developing new partnerships with Sustrans and Health Visitors. Promote Next Generation  Developing new fitness and Women's Wellbeing classes  Energy Switch and Save Advice Sessions	Ongoing distribution of activities and health information. New take up.  New partnership working and improved local take up of services and local groups. Therefore improved health outcomes.  Delivered at WPRA AGM, Xmas events Ongoing at all community meetings	Locality Management, Health Promotion, VCS partners  Locality Management
<b>WORKING</b>	Increase awareness of training and employment opportunities & advice.	Training/ employment opportunities Bulletin sent to all partners.  Hope Nottingham developing Employment Pathway, training and personal development for local citizens  Delivery of training In WELA for local volunteers, VCS partner organisations.	Regular bulletins sent. Information on Apprenticeship and Nottingham Jobs Fund distributed  Funding secured and Employment Pathway being delivered  NCH Tenants Academy, Safeguarding training completed	Locality Management  Hope Nottingham, Employment Service  NCVS Uni

# Community Engagement

## Events Delivered

Event	Lead Partners	Date/Time	Venue
Hillside Local Issues Group LAG	Neighbourhood Policing	24 <sup>th</sup> July, 5-6pm	Wollaton Park Community Centre
Wollaton Park Residents Assoc	Wollaton Park Residents Assoc	17 <sup>th</sup> July , 7.30pm	Wollaton Park Community Centre,
Wollaton Park Residents Assoc	Wollaton Park Residents Assoc	21 <sup>st</sup> August, 7.30pm	Wollaton Park Community Centre,
Wollaton Park Residents Assoc AGM Speakers-Ring Road Improvement Team, MP Lillian Greenwood	Wollaton Park Residents Assoc	18 <sup>th</sup> September, 7.30-9.30pm	Wollaton Park Community Centre
Lenton Abbey Residents Assoc LAG	Lenton Abbey Residents Assoc LAG Neighbourhood Policing	21 <sup>st</sup> August, 7pm	Sheila Roper Community Centre
NCH Environmentals Resident Consultation	NCH, Locality Management, Councillors	September 2013	Across Lenton Abbey

# Community Engagement

## Events Delivered

Event	Lead Partners	Date/Time	Venue
WELA NAT	Locality Management	Thursday 4 <sup>th</sup> July, 10am-12	Sheila Roper Community Centre
WELA NAT	Locality Management	Wednesday 11 <sup>th</sup> Sept, 1-3pm	Sheila Roper Community Centre
Domestic Violence Awareness Training	Equation (previously known as NDVF)	22 <sup>nd</sup> July, 8.30 - 4.30pm	Sheila Roper Community Centre
NCH Area 7 Panel	NCH	Wednesday 11 <sup>th</sup> Sept, 12-2pm	Sheila Roper Community Centre
Resident visit to Arkwright Meadows Community Garden	Locality Management	15 <sup>th</sup> July, 4pm-6.30pm	Arkwright Meadows Community Garden, the Meadows
Children and Young People and Family BBQ Play Area Consultation	Locality Management, supported by Family and Community Team	Thursday 1 <sup>st</sup> August 1-3pm	Play Area by Sutton Passeys Crescent Wollaton Park Estate
Fabulous Fun Day On Farndon Green	Locality Management, supported by Energy and Climate Change Team, residents and other partners	Saturday 23 <sup>rd</sup> August 1-4pm	Farndon Green Wollaton Park Estate

# Community Engagement

## Events Delivered

Event	Lead Partners	Date/Time	Venue
Welfare Reform and Energy Switch One To One Advice sessions	Locality Management, NCC Energy Advisor, Nottingham Energy Partnership	Various	Various in WELA ward
site clearance and leveling	Community Payback, City Services	August / Sept	Wensor Ave Allotment Site, LA
Lenton Abbey Playscheme 5-11yrs	Sheila Roper Playscheme and Afterschool Club Grp, Locality Management, Family and Community Team	For 6 Weds 2-4pm in school holidays	Sheila Roper Community Centre and/ or Lenton Abbey park
Graffiti Art workshop	SEND Project	14 <sup>th</sup> August 5-8pm	Sheila Roper Community Centre
Sports and arts and crafts activities 10-19yrs	Notts Clubs For Young People	5 <sup>th</sup> , 12 <sup>th</sup> , 19 <sup>th</sup> August 1-4pm and 5-8pm	Sheila Roper Community Centre Wollaton Park Community Centre



# Community Engagement

## Events Delivered

Event	Lead Partners	Date/Time	Venue
Planning Lenton Abbey Friends and Fun Day Association (LAFFDA)	Lenton Abbey Friends and Fun Day Association (LAFFDA)	3rd July, 6.30pm	Sheila Roper Community Centre
Lenton Abbey Friends & Fun Day Assoc (LAFFDA) Evaluation	Lenton Abbey Friends and Fun Day Association (LAFFDA)	17th July, 6.30pm	Sheila Roper Community Centre
Sheila Roper Community Assoc Management Committee meeting	Sheila Roper Community Assoc	15 <sup>th</sup> July 9.30am	Sheila Roper Community Centre
Sheila Roper Community Assoc Management Committee meeting	Sheila Roper Community Assoc	29th July, 10am	Sheila Roper Community Centre

# Community Engagement

## Events Delivered

Event	Lead Partners	Date/Time	Venue
Sheila Roper Community Assoc Management Committee meeting	Sheila Roper Community Assoc	5 <sup>th</sup> August, 10am	Sheila Roper Community Centre
Sheila Roper Community Assoc Management Committee meeting	Sheila Roper Community Assoc	9 <sup>th</sup> September, 10am	Sheila Roper Community Centre
Speakers	Nottingham Action Group	25 <sup>th</sup> September, 6.30pm	Rose and Crown Function Room, Derby Road
Re-launch of Hope Nottingham Youth Club Roc Café	Hope Nottingham	25 <sup>th</sup> September, 6.30-9pm	Hope Nottingham, Boundary Road, Lenton Abbey

# Community Engagement

## Future Events and Activities Planned

Event	Lead Partners	Date/Time	Venue
Neighbourhood Transformation meeting sub group meetings	Locality Management, Police, Allotments, Community Protection partners, NCH,	various	various
WELA NAT	Locality Management	9 <sup>th</sup> October, 12.30-2.30pm	Sheila Roper Community Centre
WELA NAT	Locality Management	7 <sup>th</sup> November, 10-12	Sheila Roper Community Centre
WELA NAT	Locality Management	5 <sup>th</sup> December , 10-12	Sheila Roper Community Centre
Budget Consultation Surveys	Locality Management	October/ November	Various throughout WELA ward
NCH Area 7 Panel	NCH	13 <sup>th</sup> November, 12-2pm	Wollaton Park Community Centre

# Community Engagement

## Future Events and Activities Planned

Event	Lead Partners	Date/Time	Venue
Lenton Abbey Afterschool Club 5-11yrs	Sheila Roper Playscheme and Afterschool Club Grp, Locality Management, Family and Community Team	Every Tuesday 4-5.30pm in school term time	Sheila Roper Community Centre and/ or Lenton Abbey park
Lenton Abbey Playscheme 5-11yrs	Sheila Roper Playscheme and Afterschool Club Grp, Locality Management, Family and Community Team	Wednesday 2-4pm in school holidays	Sheila Roper Community Centre and/ or Lenton Abbey park
Sports and arts and crafts activities 10-19yrs	VCS provider	October	Sheila Roper Community Centre Wollaton Park Community Centre
Xmas Lights Switch On	Locality Management, supported by residents/ citizens , VCS partners	December , 5pm	The Blossoms, Woodside Road Shops
Xmas Lights Switch On and Carol Concert	Locality Management, supported by residents/ citizens , VCS partners	December , 5pm	Farndon Green

# Community Engagement

## Ward Walks

Area/Estate	Date/Time	Meeting Point
Manton Crescent (South half) and Arden Close, Lenton Abbey	Thursday 17 <sup>th</sup> October 10.45am - 11.45am	The Blossoms, Woodside Road
Hawton Crescent (North half) Wollaton Park estate	Thursday 21 <sup>st</sup> November, 10.45am - 11.45am	Corner of Middleton Boulevard/ Hawton Crescent (North half) Wollaton Park estate
Hatthern Green, Enderby Sq, Bosley Sq and Meriden Avenue, Lenton Abbey	Thursday 19 <sup>th</sup> December, 10.45am - 11.45am	The Blossoms, Woodside Road

## Community Meetings

Group	Date	Venue
Nottingham Action Group	23 <sup>rd</sup> October , 6.30pm	Rose and Crown Function Room, Derby Road
Nottingham Action Group	27 <sup>th</sup> November, 6.30pm	St Mary's Church, Wollaton Hall Drive, off Derby Road

# Community Engagement

## Community Meetings

Group	Date	Venue
Sheila Roper Community Assoc MC	7 <sup>th</sup> October , 11am	Sheila Roper Community Centre
Sheila Roper Community Assoc MC	21 <sup>st</sup> October , 11am	Sheila Roper Community Centre
Wollaton Park Residents Assoc	16 <sup>th</sup> October , 7.30pm	Wollaton Park Community Centre
Wollaton Park Residents Assoc	20 <sup>th</sup> November, 7.30pm	Wollaton Park Community Centre
Hillside Local Issues Group LAG	Wed 4 <sup>th</sup> December, 5pm	St Mary's Church, Wollaton Hall Drive, off Derby Road
LARA & Local Issues Group LAG	16 <sup>th</sup> October, 7pm	Sheila Roper Community Centre
LARA & Local Issues Group LAG	11 <sup>th</sup> December, 7pm	Sheila Roper Community Centre
Wollaton Park Over 50's Coffee Morning Group and gentle exercise session	Every Thursday 10-12	Wollaton Park Community Centre

# Finance

- **Ward Councillor Budgets**

Total amount allocated from 1<sup>st</sup> April 2013 £ 1,900

Applications pending

Budget remaining unallocated £ 25,400 (includes underspend from 12/13)

Community Safety and Wellbeing Fund unallocated £14,749

- **Area Capital Fund**

Total amount allocated from 1<sup>st</sup> April 2013 to date £ 3,359

Awaiting quotes for works

2013-2015 LTP Budget remaining unallocated as of 2<sup>nd</sup> October 2013  
£83,029 (inc. of 2012-2013 underspend)

**2013-2014 Public Realm** element £ 19,800

- **NCH Environmentals**

Total amount allocated from 1<sup>st</sup> April 2013 to date £ 5,372.72

Awaiting quotes for works

Budget remaining unallocated £14,876.42  
(inc. of £ 3,846 2012-2013 underspend)

# Ward Summary

Ward NAT Meeting Dates and Venues

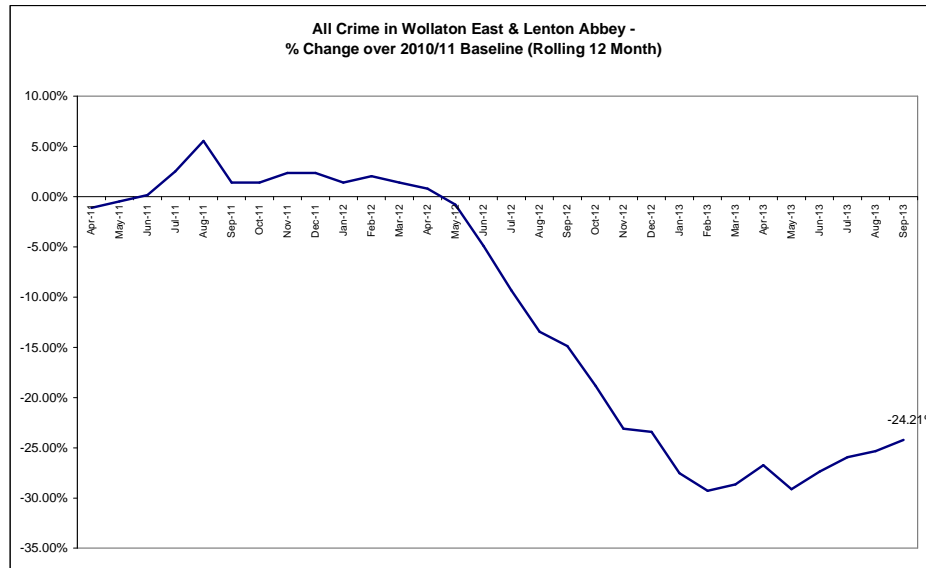
Date	Time	Venue
4th July	10.00-12.00	Sheila Roper Community Centre
5th September	10.00-12.00	Sheila Roper Community Centre
9th October	12.30- 2.30	Sheila Roper Community Centre
7th November	10.00-12.00	Sheila Roper Community Centre
5th December	10.00-12.00	Sheila Roper Community Centre

Ward NAT Attendees

NAT Members (TORs i.e Nom, Ndo, CP Team Leader etc.)	
Name of Officer	Email Address
Councillors	Sally.Longford@nottinghamcity.gov.uk
Councillors	Sam.Webster@nottinghamcity.gov.uk
NDO	<a href="mailto:pauline.dorey@nottinghamcity.gov.uk">pauline.dorey@nottinghamcity.gov.uk</a>
NOM	<a href="mailto:tony.brown@nottinghamcity.gov.uk">tony.brown@nottinghamcity.gov.uk</a>
PS Neil Langham	<a href="mailto:neil.langham@nottinghamshire.pnn.police.uk">neil.langham@nottinghamshire.pnn.police.uk</a>
PC	<a href="mailto:joanna.bampton@nottinghamshire.pnn.police.uk">joanna.bampton@nottinghamshire.pnn.police.uk</a>
PC	<a href="mailto:jez.shaw@nottinghamshire.pnn.police.uk">jez.shaw@nottinghamshire.pnn.police.uk</a>
PCSO	natasha.bowe@nottinghamshire.pnn.police.uk/ helen.russell-taylor@nottinghamshire.pnn.police.uk
PCSO	daniel.lane@nottinghamshire.pnn.police.uk
NCH Housing Manager	<a href="mailto:Rukaiyat.Ahmed@nottinghamcityhomes.org.uk">Rukaiyat.Ahmed@nottinghamcityhomes.org.uk</a>
NCH Housing Manager	<a href="mailto:john.higgins@nottinghamcityhomes.org.uk">john.higgins@nottinghamcityhomes.org.uk</a>
Nottingham University Rachel Van krimpen	<a href="mailto:rachel.vankrimpen@nottingham.ac.uk">rachel.vankrimpen@nottingham.ac.uk</a>
Fire Service Guninder Nagi	<a href="mailto:Guninder.Nagi@notts-fire.gov.uk">Guninder.Nagi@notts-fire.gov.uk</a>
Children and Families	Sue.Mallender@nottinghamcity.gov.uk
Children and Families	<a href="mailto:van.henry@nottinghamcity.gov.uk">van.henry@nottinghamcity.gov.uk</a>
Health Promotion	Uzmah.Bhatti@nottinghamcity.nhs.uk
CPO	laurence.burns@nottinghamshire.pnn.police.uk
CPO	michael.killingbeck9755@nottinghamshire.pnn.police.uk
Social Housing representatives voluntary and community sector (VCS) partners.	



# Crime

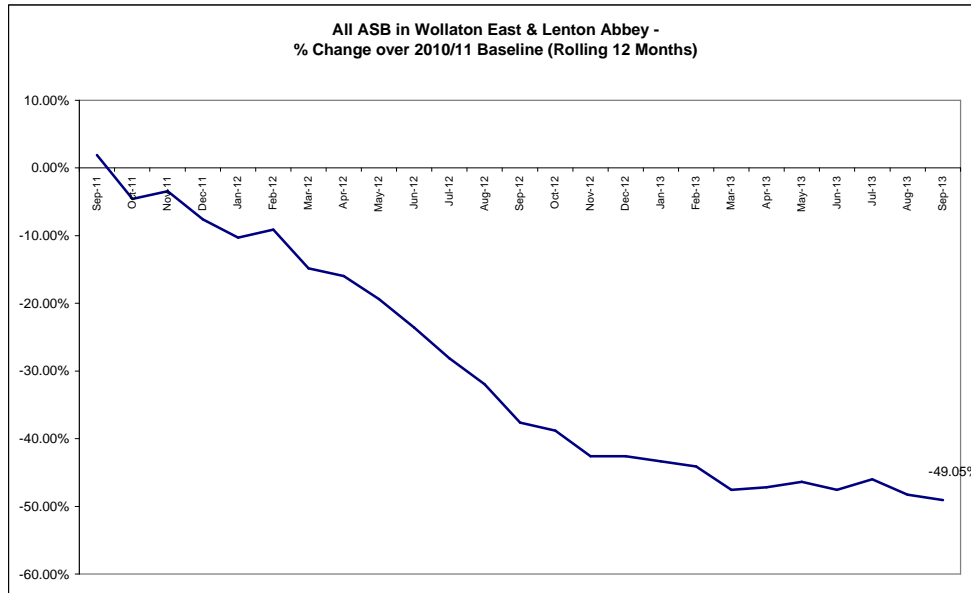


Red	7 more crimes	15.31%
Amber		
Green		

\*Refers to September 2013 compared to September 2012

- The above baseline graph compares the *rolling* 12 month total of crime in Wollaton East and Lenton Abbey to a *fixed* 12 month 2010/11 baseline. The current 12 month total is showing a reduction of 24% against the baseline.
- In September 2013 there were 44 crimes which is an increase of 18.92% (7 crimes, see above RAG rating) compared to last year. The Division as a whole experienced a reduction in all crime of *approximately* 0.8%.
- Year to date crime in the ward has increased by 15.31% (32 crimes, see Table 1 of page 5). In the Division as a whole, all crime is up by *approximately* 4.1%.
- The largest volume increase this month was in autocrime which is up 6 crimes compared to last year, see Table 1 of page 5).
- Crimes with a domestic flag assigned to them remain static at 3 offences per month for the last 3 months see Table 2 of page 5). For September 2013 the ward ranked 18<sup>th</sup> for this type of crime out of the 20 wards in the Division.
- The rate (per 1000 of population) of all crime in Wollaton East and Lenton Abbey is far lower than the average for the 20 wards (figures are year to date, see Table 3 of page 6).

# All ASB



Red		
Amber		
Green	2 less calls	-25%

Refers to September 2013 compared to September 2012

- The above baseline graph compares the *rolling* 12 month total of ASB in Wollaton East and Lenton Abbey to a *fixed* 12 month 2010/11 baseline. The most recent 12 month total is showing a reduction of 49% against the baseline.
- In September 2013 there were 6 ASB calls in the ward. This is a reduction of 25% (2 calls, see above right RAG rating) compared to last year. The Division as a whole experienced an increase of *approximately* 5.8% on this measure.
- Year to date ASB in the ward has reduced by 4 calls this year compared to last (see Table 5 of page 7). In the Division as a whole, ASB is down by *approximately* 6.7%.
- The rate (per 1000 of population) of ASB in Wollaton East and Lenton Abbey is showing the lowest rate for the 20 wards (September 2013 figures, see Table 4 of page 7).

# Crime Figures

**Table 1: Crime Types by Month and Year to Date**

WOLLATON EAST & LENTON ABBEY	Sep-12	Sep-13	Change	% Change	Prev YTD	YTD	Change	% Change
Autocrime	2	8	6	300.00%	9	24	15	166.67%
Burglary	2	4	2	100.00%	21	31	10	47.62%
Burglary Other	2	4	2	100.00%	16	13	-3	-18.75%
Damage	4	6	2	50.00%	21	24	3	14.29%
Drugs	2	1	-1	-50.00%	10	9	-1	-10.00%
Fraud	0	0	0		4	3	-1	-25.00%
Other	1	0	-1	-100.00%	6	6	0	0.00%
Personal Robbery	0	1	1		1	1	0	0.00%
Robbery Business	0	0	0		0	0	0	
Sexual	1	1	0	0.00%	4	4	0	0.00%
Theft	16	13	-3	-18.75%	85	85	0	0.00%
Theft from Person	0	0	0		3	0	-3	-100.00%
Threats	2	2	0	0.00%	3	11	8	266.67%
Violence	5	4	-1	-20.00%	26	30	4	15.38%
<b>Total</b>	<b>37</b>	<b>44</b>	<b>7</b>	<b>18.92%</b>	<b>209</b>	<b>241</b>	<b>32</b>	<b>15.31%</b>

**Table 2: Crimes with a Domestic Flag Assigned to them by Month**

Ward	Sep-12	Oct-12	Nov-12	Dec-12	Jan-13	Feb-13	Mar-13	Apr-13	May-13	Jun-13	Jul-13	Aug-13	Sep-13	Ward Rank (Sep-13)
WOLLATON EAST & LENTON ABBEY	1	2	0	6	0	5	3	3	2	4	3	3	3	18

# Crime Figures

Table 3: Crime Types by Rate (per 1000 of population) of the 20 Wards – Figures are Year to Date 2012/13

WARD	ALL CRIME	AUTOCRIME	BURGLARY	DAMAGE	PERSONAL ROBBERY	THEFT	VIOLENCE
ARBORETUM	66.22	3.95	7.18	8.34	4.22	12.74	14.54
ASPLEY	48.29	3.86	3.80	7.60	0.51	8.68	12.71
BASFORD	39.24	4.94	3.33	7.16	0.74	7.71	8.58
BERRIDGE	42.14	4.34	4.02	6.38	0.70	10.83	8.95
BESTWOOD	32.53	2.03	2.75	7.04	0.72	4.18	8.54
BILBOROUGH	40.32	4.65	3.87	7.38	0.48	6.91	9.05
BRIDGE	43.88	2.15	1.33	5.23	0.62	18.76	8.10
BULWELL	60.22	3.96	3.28	12.13	1.24	15.91	12.32
BULWELL FOREST	36.51	2.28	2.28	6.46	1.18	10.21	7.20
CLIFTON NORTH	28.79	2.17	2.79	5.66	1.01	4.73	6.36
CLIFTON SOUTH	26.74	1.43	3.37	4.73	0.29	5.09	7.67
DALES	37.60	2.43	2.00	7.23	0.30	9.42	8.02
DUNKIRK & LENTON	48.53	8.15	5.13	5.04	0.64	14.84	6.41
LEEN VALLEY	39.34	3.08	3.74	6.63	1.12	9.72	7.19
MAPPERLEY	39.69	4.80	2.90	5.36	0.38	8.39	7.51
RADFORD & PARK	37.56	4.24	4.54	3.37	1.28	11.58	5.41
SHERWOOD	44.25	4.02	3.44	4.35	1.36	15.76	8.24
ST ANNS	47.39	3.44	2.22	9.09	2.65	6.09	12.17
WOLLATON EAST & LENTON ABBEY	24.22	2.41	3.11	2.41	0.10	8.54	3.01
WOLLATON WEST	20.55	2.78	2.78	2.37	0.14	5.90	2.37
WARD AVERAGE	40.20	3.56	3.39	6.20	0.98	9.80	8.22

	Highest Rate
	Second Highest Rate
	Third Highest Rate

# All ASB Figures

Table 4: All ASB by Rate (per 1000 of population) of the 20 Wards

WARD	RATE (PER 1000 OF POP.) Sep 2013	
ARBORETUM	7.99	Highest Rate
ASPLEY	3.75	
BASFORD	3.33	
BERRIDGE	4.45	
<b>BESTWOOD</b>	<b>4.95</b>	
BILBOROUGH	4.29	
BRIDGE	4.10	
BULWELL	5.08	Third Highest Rate
BULWELL FOREST	3.89	
CLIFTON NORTH	2.02	
CLIFTON SOUTH	3.51	
DALES	3.95	
DUNKIRK & LENTON	3.48	
LEEN VALLEY	2.71	
MAPPERLEY	3.09	
RADFORD & PARK	3.88	
SHERWOOD	3.44	
ST ANNS	6.59	Second Highest Rate
WOLLATON EAST & LENTON ABBEY	0.60	
WOLLATON WEST	1.22	
<b>WARD AVERAGE</b>	<b>3.82</b>	

Table 5: All ASB by Month and Year to Date

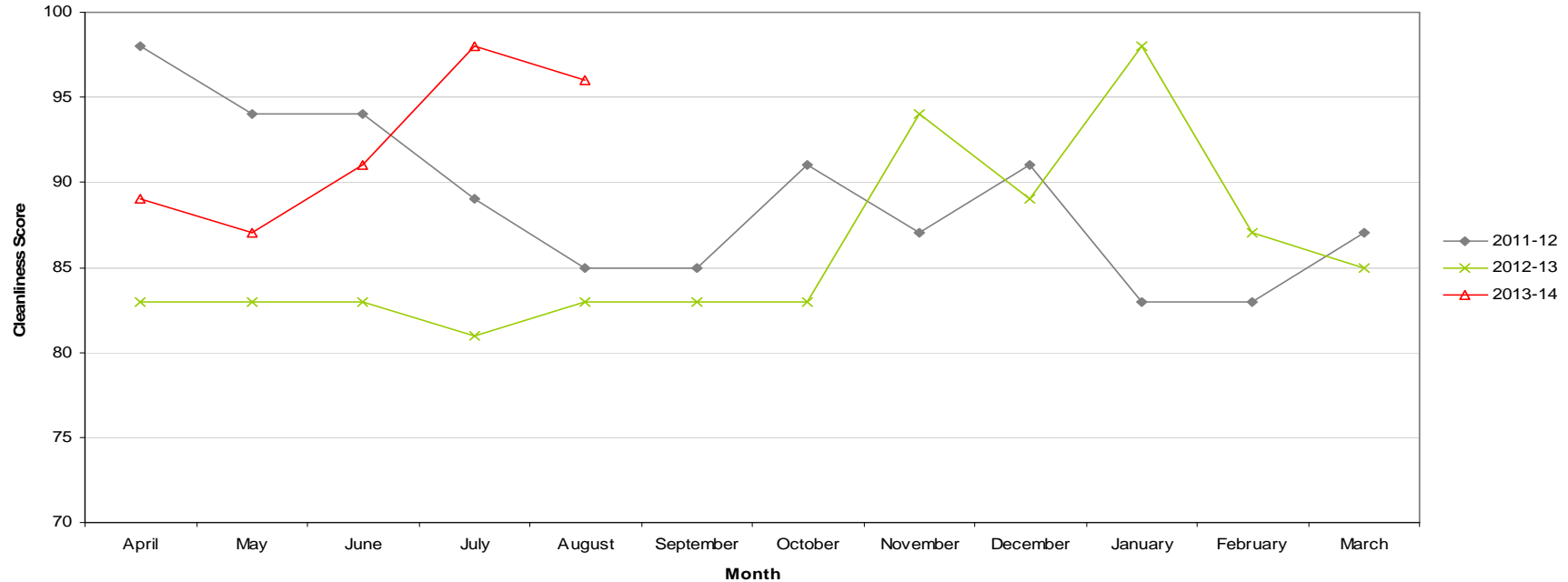
Ward	Sep-12	Sep-13	Change	% Change	Prev YTD	YTD	Change	% Change
WOLLATON EAST & LENTON ABBEY	8	6	-2	-25.00%	83	79	-4	-4.82%

# Cleanliness Index

Cleanliness Index Score	<b>96</b>
Performance compared to previous year	<b>↗</b>
Performance compared to neighbourhoods target of 86	<b>↗</b>

- All data refers to a comparison with the previous year's month
- It is proposed that performance over time graphs be used for each indicator
- Historic data for comparison is not available for dog fouling

Cleanliness Index - Wollaton East & Lenton Abbey

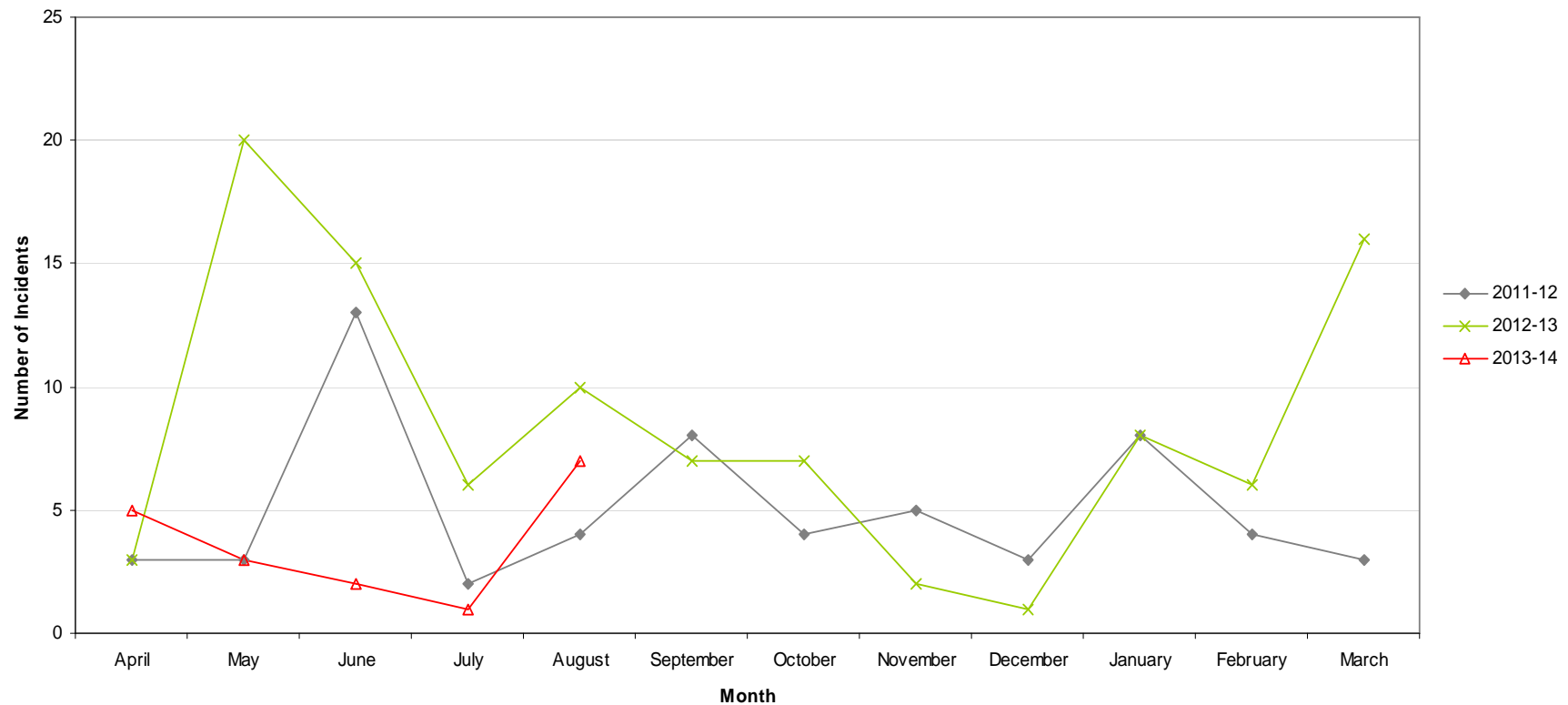


# Graffiti Reports

<b>RED</b>		
<b>AMBER</b>		
<b>GREEN</b>	<b>7 incidents</b>	<b>Decrease of 3</b>

- All data refers to a comparison with the previous year's month
- It is proposed that performance over time graphs be used for each indicator
- Historic data for comparison is not available for dog fouling

Incidents of Graffiti - Wollaton East & Lenton Abbey

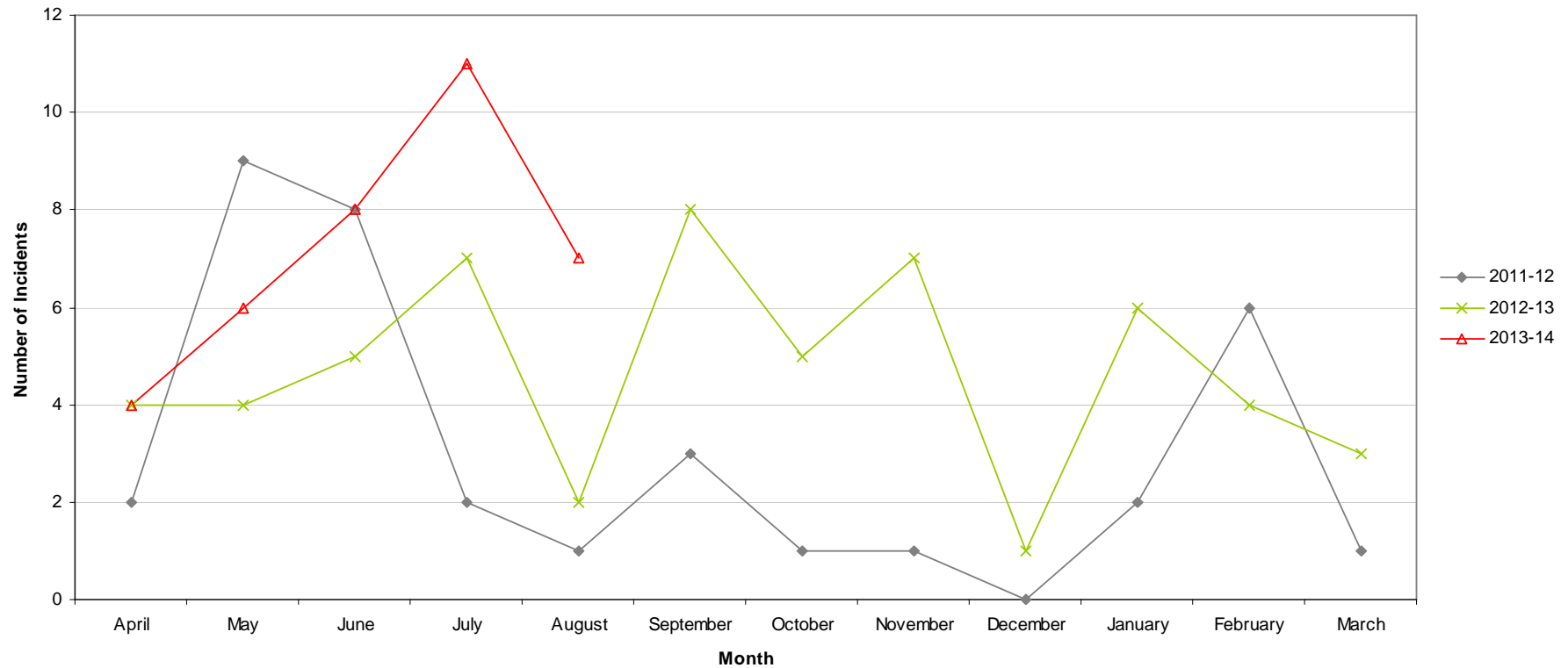


# Fly Tipping

<b>RED</b>	<b>7 incidents</b>	<b>Increase of 5</b>
<b>AMBER</b>		
<b>GREEN</b>		

- All data refers to a comparison with the previous year's month
- It is proposed that performance over time graphs be used for each indicator
- Historic data for comparison is not available for dog fouling

Incidents of Fly Tipping - Wollaton East & Lenton Abbey





# Unemployment Rate

Unemployment in City wards, August 2013

Ward	Aug-13			Change in last month		Change in last year	
	Number	Rate	City Rank	Number	%	Number	%
Arboretum	817	6.9	6	1	0.1	-13	-1.6
Aspley	1,069	9.5	1	-35	-3.2	-128	-10.7
Basford	689	6.2	9	-3	-0.4	-41	-5.6
Berridge	1,008	6.9	6	-7	-0.7	-82	-7.5
Bestwood	893	7.9	4	-19	-2.1	-96	-9.7
Bilborough	678	6.5	8	-44	-6.1	-84	-11
Bridge	613	5.8	10	-7	-1.1	-143	-18.9
Bulwell	963	8.8	2	-22	-2.2	-82	-7.8
Bulwell Forest	413	4.5	14	-4	-1	-31	-7
Clifton North	386	4.4	15	-4	-1	5	1.3
Clifton South	493	5.6	11	7	1.4	-13	-2.6
Dales	812	7	5	5	0.6	-71	-8
Dunkirk and Lenton	204	1.9	19	-10	-4.7	-58	-22.1
Leen Valley	282	4	16	-14	-4.7	-69	-19.7
Mapperley	625	5.6	11	-7	-1.1	-125	-16.7
Radford and Park	725	3.8	17	-21	-2.8	-51	-6.6
Sherwood	503	4.7	13	-4	-0.8	-49	-8.9
St Ann's	1,162	8.4	3	-21	-1.8	-80	-6.4
Wollaton East and Lenton Abbey	127	1.3	20	-2	-1.6	-17	-11.8
Wollaton West	189	2.1	18	-7	-3.6	-73	-27.9

*This is an edited version of a report produced by: Geoff Oxendale, Information and Research Officer, Nottingham City Council. Claimant count of Job Seekers Allowance (JSA) is used as a proxy measure for unemployment.*

*Wards are ranked from 1 (highest Rate, per 1000 of population, of JSA claimants) to 20 (lowest Rate).*

# Housing

## Ward Report - Wollaton East & Lenton Abbey Ward



### WELA1 Anti-social behaviour





Performance indicator and definition	Current Target	2013/14			2012/13	2011/12
		Value	Status	Long Trend	Value	Value
% of ASB cases resolved by first intervention – Radford  <i>Note: This PI monitors how many ASB cases NCH resolved on the first intervention e.g. written warning. Data for this indicator is not available by ward and is reported by Housing Office.</i>	75%	84%			78.92%	
% of ASB cases resolved – Radford  <i>Note: This PI measures the proportion of ASB cases NCH has successfully resolved. Data for this PI is not available by ward and is reported by Housing Office.</i>	97.6%	100%			100%	97.53%
Number of new ASB cases – Radford  <i>Note: Data for this PI is only available by Housing Office.</i>		50			144	229

### WELA2 Repairs





Performance indicator and definition	Current Target	2013/14			2012/13	2011/12
		Value	Status	Long Trend	Value	Value
% of repairs completed in target – Wollaton East & Lenton Abbey Ward  <i>Note: This PI monitors the proportion of repairs being completed within agreed timescales.</i>	96%	96.87%			91.93%	94.58%
Tenant satisfaction with the repairs service  <i>Note: Data for this PI is only available citywide</i>	8.8	8.59			8.64	8.65

# Housing

## WELA3 Rent Collection



Performance indicator and definition	Current Target	2013/14			2012/13	2011/12
		Value	Status	Long Trend	Value	Value
% of rent collected – Radford  <i>Note: This PI measures the amount of rent collected (including tenant arrears) as a percentage of rent due for the current year. Data for this indicator is not available by ward and is reported by Housing Office.</i>	100%	97.4%			100.5%	100.6%
% of tenancies ending due to eviction  <i>Note: This PI monitors the percentage of tenants being evicted due to rent arrears and is reported citywide.</i>	0.55%	0.62%			0.55%	0.61%

## WELA4 Empty properties







Performance indicator and definition	Current Target	2013/14			2012/13	2011/12
		Value	Status	Long Trend	Value	Value
Average void re-let time (calendar days) – Wollaton East & Lenton Abbey Ward  <i>Note: This PI measures how long it takes NCH to re-let empty properties from the end of the old tenancy to the start of the new tenancy</i>	25	14			29.21	22.52
Number of empty properties awaiting decommission – Wollaton East & Lenton Abbey Ward		0			2	1

# Housing

## WELA5 Tenancy sustainment

Performance indicator and definition	Current Target	2013/14			2012/13	2011/12
		Value	Status	Long Trend	Value	Value
Percentage of new tenancies sustained - Wollaton East & Lenton Abbey Ward <i>Note: This PI measures the number of new tenants who are still in their tenancy 12 months later.</i>	93%	100%			100%	

### Key:

-  Performance on or exceeding target
-  Performance below target
-  Data only performance indicator
-  Performance has improved compared to two years ago
-  Performance has deteriorated compared to two years ago
-  Performance unchanged

Data prepared by Nottingham City Homes Performance Team

For more information please contact Tricia Quinn, Performance Manager on 0115 9157365 or Marcus Parton, Performance Analyst 0115 915715

# Community Protection

*Data has been received from Community Protection and where postcodes have been listed these have been geo-coded and mapped to determine the ward. All addresses relate to the address of the Perpetrator.*

*FPNs are not currently available at ward level.*

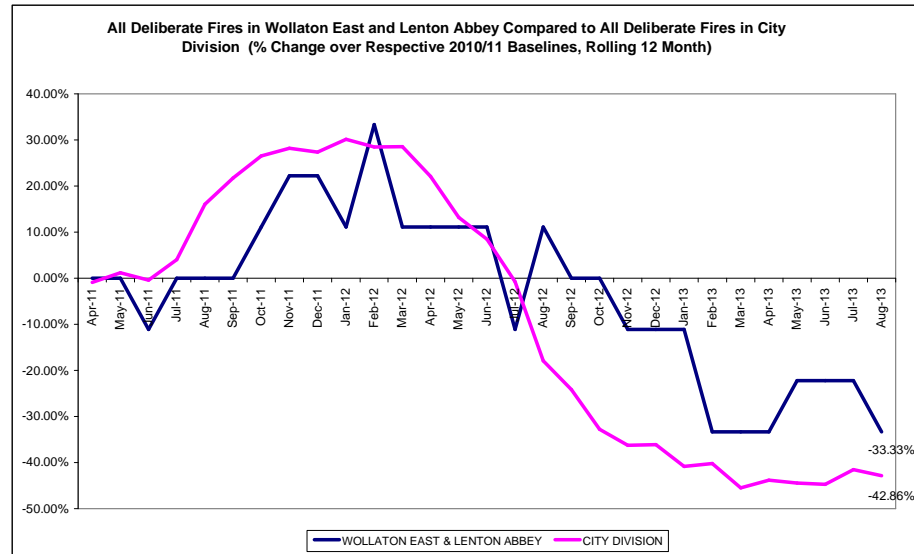
**In September 2013 there was 1 Statutory Notices for Environment and 1 suspended possession order for ASB**

*For enquiries regarding Community Protection court outcomes please contact the Operational Manager for the locality.*

# Fire

Table: Volume of Deliberate Fires by Ward

Ward	Aug-12	Aug-13	Change	% Change	Previous YTD	YTD	Change	% Change
Arboretum	4	0	-4	-100.00%	9	16	7	77.78%
Aspley	7	4	-3	-42.86%	28	31	3	10.71%
Basford	6	0	-6	-100.00%	27	17	-10	-37.04%
Berridge	5	5	0	0.00%	20	20	0	0.00%
Bestwood	4	5	1	25.00%	17	32	15	88.24%
Bilborough	0	0	0		20	8	-12	-60.00%
Bridge	3	1	-2	-66.67%	8	10	2	25.00%
Bulwell	7	8	1	14.29%	33	35	2	6.06%
Bulwell Forest	3	4	1	33.33%	16	8	-8	-50.00%
Clifton North	1	0	-1	-100.00%	4	6	2	50.00%
Clifton South	5	6	1	20.00%	13	18	5	38.46%
Dales	0	1	1		3	10	7	233.33%
Dunkirk and Lenton	1	1	0	0.00%	3	4	1	33.33%
Leen Valley	1	1	0	0.00%	13	16	3	23.08%
Mapperley	1	2	1	100.00%	9	9	0	0.00%
Radford and Park	4	5	1	25.00%	14	10	-4	-28.57%
Sherwood	2	2	0	0.00%	5	8	3	60.00%
St. Anns	6	2	-4	-66.67%	12	19	7	58.33%
Wollaton East and Lenton Abbey	0	1	1		0	1	1	
Wollaton West	0	0	0		0	0	0	
<b>Total</b>	<b>60</b>	<b>48</b>	<b>-12</b>	<b>-20.00%</b>	<b>254</b>	<b>278</b>	<b>24</b>	<b>9.45%</b>



- The above table shows volume of deliberate (primary and secondary) fires in the 20 wards. In August 2013 there was one fire in Wollaton East and Lenton Abbey. This involved a secondary refuse fire. Year to date (compared to the corresponding period last year) there has been an increase of 1 fire.
- The graph on the right shows a *rolling* 12 month total of deliberate fires in Wollaton East and Lenton Abbey against the *fixed* 2010/11 baseline. The performance of the City Division against *its* baseline has also been shown for comparison purposes.

Note: Where ward boundaries overlap with the City Centre fires that occurred in the City Centre have been **included** in the ward figures.

# Methodology

Data has not been audited or verified and therefore must only be used as a reflection of crime.

Crime data and ASB calls have been extracted from the Police systems and mapped to ascertain which Ward they occurred in.

Where a ward boundary overlaps with the City Centre, crime data and ASB calls relating to the City Centre have been removed.

Where possible the most recent data is used, although for some areas this may be a month further in arrears.

Discussions continue with other agencies regarding what further data can be included.